



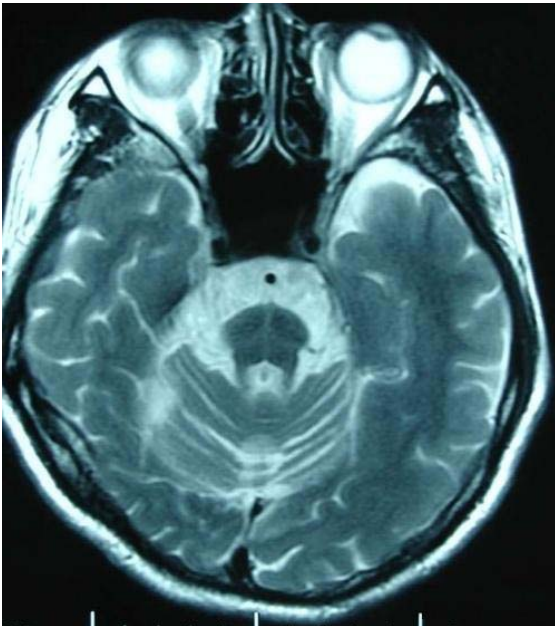
HOLY C.O.W.!

IT'S...

Clinical Question of the Week #10
September 1st, 2008 through September
8th, 2008

Please e-mail your answers to Kuo, Tim, Wendy, and Kevin (klian@mednet.ucla.edu; tprovias@mednet.ucla.edu; wsimon@mednet.ucla.edu; kbreger@mednet.ucla.edu) by 0800 on Monday, September 8th, 2008. The resident or intern with the most correct answers at the end of each month will receive a prize!

Case: A 51-year-old Hispanic truck driver is brought in by his family after developing progressively worsening loss of control of his limbs, wobbly gait, and inability to maintain a stable seated position over the past several weeks. These have now limited his ability to work. Over the past few months, they have also noticed that his verbal output has been less and he seems to have less expression when engaging members of the family, although his mentation appears to be only mildly decreased during the same period of time. Last week, the family also began noticing that he had one or two episodes of choking on his food. He does not have a tremor, but additional features noted on examination include nystagmus and hyperreflexia. Laboratory tests including thiamine, thyroid function tests, and ceruloplasmin are within normal range. He does not take any medications. A T2-weighted MRI image is shown below.



Questions:

1. What is the diagnosis?
2. What are the three clinical subgroups of this syndrome?
3. What is the finding shown in the image?

4. What is the diagnostic pathologic finding on biopsy?