



# HOLY C.O.W.!

## IT'S...

Clinical Question of the Week #11  
September 8th, 2008 through September  
15th, 2008

Please e-mail your answers to Kuo, Tim, Wendy, and Kevin ([klian@mednet.ucla.edu](mailto:klian@mednet.ucla.edu); [tprovias@mednet.ucla.edu](mailto:tprovias@mednet.ucla.edu); [wsimon@mednet.ucla.edu](mailto:wsimon@mednet.ucla.edu); [kbreger@mednet.ucla.edu](mailto:kbreger@mednet.ucla.edu)) by 0800 on Monday, September 15<sup>th</sup>, 2008. The resident or intern with the most correct answers at the end of each month will receive a prize!

**Case:** An 17-year-old man presents for initial intake evaluation at the Medical Subspecialties Clinic at UCLA. Unfortunately, however, his medical records have not yet been forwarded from his previous physician's clinic and his mother (who knows his medical history best) is wrangling for parking in the Medical Plaza lot. What he can recall is that his mother told him he had "fits" as an infant where he seemed out of breath and grunted and seemed ashen. He is status post a cardiothoracic surgery but can't describe any of the details of the procedure. His pre-operative anatomy is shown below.

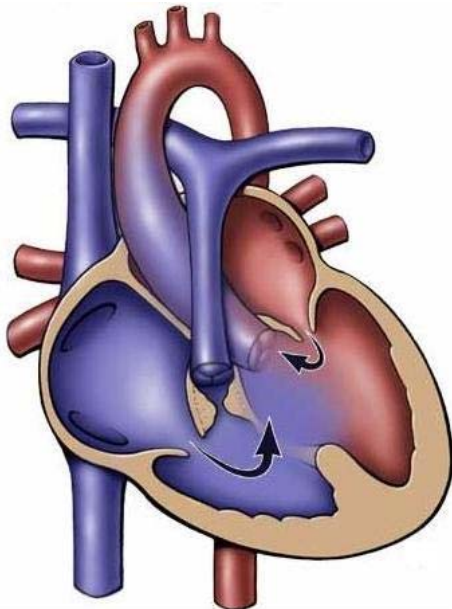


Figure 1 – Black arrows depict blood flow.

### Questions:

1. What is the diagnosis?
2. What are the "fits," and how are they treated?
3. What is the surgery that the patient is likely to have had?
4. Name two long-term complications of this condition.