



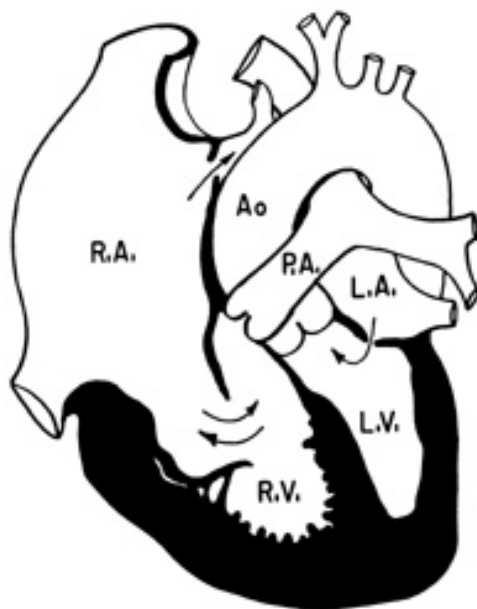
HOLY C.O.W.!

IT'S...

Clinical Question of the Week #24
December 8th, 2008 through December
15th, 2008

Please e-mail your answers to Kuo, Tim, Wendy, and Kevin (klian@mednet.ucla.edu; tprovias@mednet.ucla.edu; wsimon@mednet.ucla.edu; kbreger@mednet.ucla.edu) by 0800 on Monday, December 15th, 2008. The resident or intern with the most correct answers at the end of each month will receive a prize!

Case: A 35-year-old woman presents to establish primary care in the Internal Medicine Suite. She has a history of bipolar disorder that has been well controlled on medication and otherwise has been healthy to her knowledge. Her other past medical history is significant only for appendectomy at the age 14. She is married and has one three-year-old child, who accompanies her today. Family history is notable for history of depression in her mother and uncle. Her physical exam is unremarkable. She asks if you could take a listen to her son, as he was recently noted to have an incidental murmur. He underwent some sort of ultrasound tests, but she didn't quite understand what all the pediatric doctors were talking about. She brings this picture that the specialist drew (below), and asks if you might be able to explain.



Questions:

1. What is the diagnosis?
2. Name the two primary abnormalities of this condition.
3. Name two EKG findings associated with this condition.
4. What are the indications for surgery? What surgical techniques are used?