

HOLY C.O.W.!

IT'S...

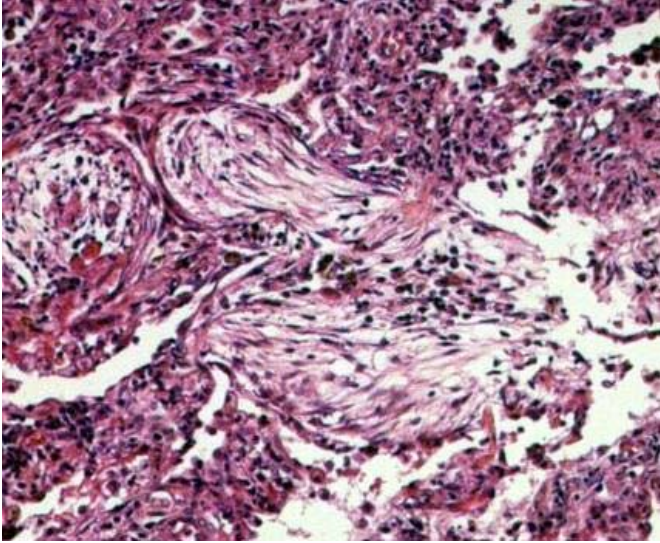
Clinical Question of the Week #7
August 11th, 2008 through August 18th,
2008

Please e-mail your answers to Kuo, Tim, Wendy, and Kevin (klian@mednet.ucla.edu; tprovias@mednet.ucla.edu; wsimon@mednet.ucla.edu; kbreger@mednet.ucla.edu) by 0800 on Monday, August 18th, 2008. The resident or intern with the most correct answers at the end of each month will receive a prize!

Case: A 57-year-old man presents with three weeks of worsening cough and dyspnea. His initial symptoms included a flu-like syndrome with fevers and malaise, followed by decreased appetite and an eight pound weight loss over the same period of time. His past medical history is notable for hypertension and BPH; he is a non-smoker and works at a law firm. Examination reveals bilateral inspiratory crackles, and labs reveal an elevated WBC with neutrophil predominance. A CXR and HRCT chest were obtained and are shown below. Additionally, the patient later had a lung biopsy, also shown below.



CXR and CT chest



Lung Biopsy

Questions:

1. What is the diagnosis?
2. What is notable about the pattern of infiltrates seen on radiology imaging in this disease?
3. What pathologic feature is shown on the biopsy specimen?
4. What is the treatment?